



Technical Specifications

Built / Ship Yard	SAIKI HEAVY INDS JAPAN
Flag	Marshall Islands
Class	Rina
P&I Club	UK Club
Type	Bulk Carrier / Open Hatch Super Box
Dwt	37,322 mts on 10,938 m Summer Draft
Tpc	45,67 mt on Summer Draft
L.o.a	177,85 m
Beam	28,60 m
Light Ship	8455 mt
Moulded Depth	15,00 m
Tonnage Gt / Nt	22,872/ 12,722



	Summer	Winter	Tropical
Deadweight	37.322 mts	36.290 mt	38.357 mt
Draft	10.957 m	10.731 m	11.183 m
Freeboard	4,043 m	4,269 m	3.817 m

Hatch Cover No	1	2	3	4	5
Hatch Cover Size	15.2 x 20.00 m.	22.40 x 24.00 m	22.40 x 24.00 m	22.40 x 24.00 m	22.40 x 24.00 m
Tank Top dimensions	13.76 m X 20.00 m X 27.2 m	24.0 m X 27.2 m	24.0 m X 27.2 m	24.0 m X 27.2 m	12.59 m X 24.00 m X 28.0 m
Hold Capacity	1	2	3	4	5
Grain / Bale (Cub.m)	6.500 / 6.424	10.080 / 9.454	10.104 / 10.002	10.061 / 9.959	9.043 / 8.953
Total					

Total	45.788 / 44.792
Type of Hatch Cover	Hydraulic folding Type
Gear	4 Cranes x 36,0 mts Swl
Ventilation/A60/CO2/ITF	Elec / Yes / Yes / Yes
Tanktop Strength	Ch No 1 , 3 ,5 20 mts / sqm & Ch no 2 , 4 13 mts / sqm
Hatch Cover Strength	NA
Main Engine	Man - B&W 6S46MC-B8.3
Generators:	3 X YANMAR 6EY-18AL / 500 Kw / 900 RPM
Bunker Capacity %85	Vlsifo : Abt 1.050 m3 (%85) & 390 m3 (%85)

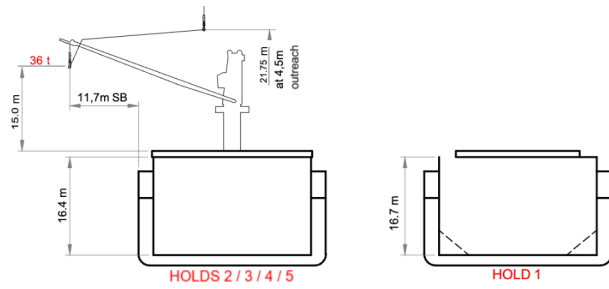
Speed / Consumption

Laden Condition	ABT 12,00 KNOTS ON ABT 16,50 MT VLSIFO/HSFO + 0,1MT LSMGO
Ballast Condition	ABT 12,50 KNOTS ON ABT 16,50 MT VLSIFO/HSFO + 0,1MT LSMGO
Port Consumption	ABT 3,0 MTS VLSIFO
Winches Working	ABT 5,6 MTS VLSIFO

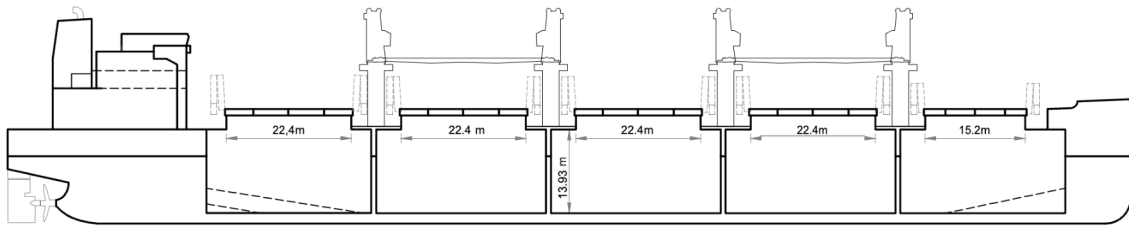




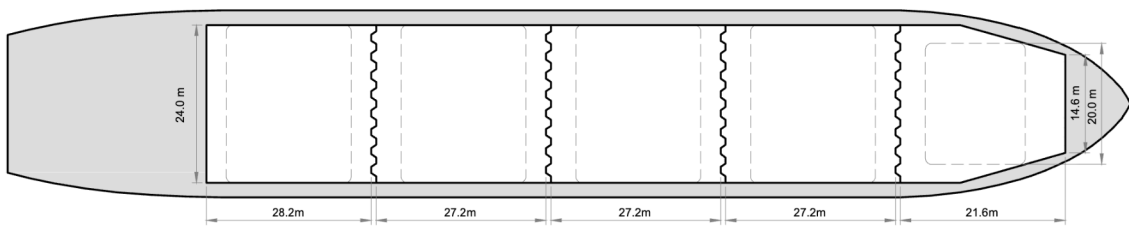
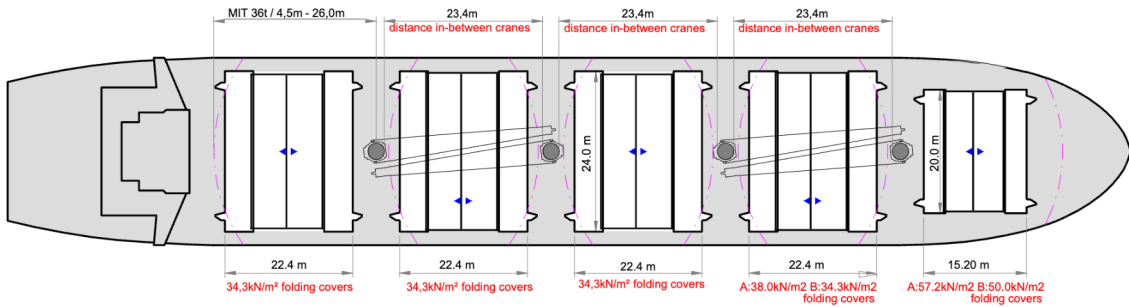
DEVBULK DORUK



SIDE VIEW



MAIN DECK



HOLDS & DOUBLE BOTTOM

